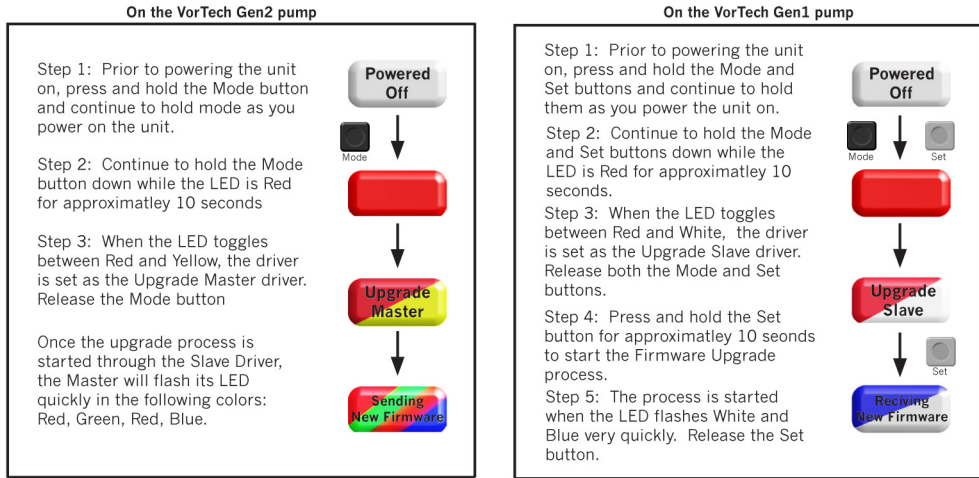


Firmware Upgrade

During the firmware upgrade process, turn off all Wireless Wave Drivers within 20 feet of the two that you will be performing the upgrade process with. Also, move the two drivers that you will be using to upgrade within 3 feet of each other.



The entire upgrade process takes approximately three minutes. The upgrade is still in progress while the Master driver flashes red, green, red, blue quickly and the slave driver flashes blue and white quickly. The process is complete when both drivers flash a LED code with half second flashes. Note: If both WWD's already have the same firmware revision, the upgrade process will not occur, and the Master will show the Upgrade Completed Successfully LED code.

The final status of your upgrade can be determined from the LED code on the Master Driver:



Upgrade Completed Successfully: Both Drivers now have the same Firmware.



Upgrade Failed: Communication Error.



Upgrade Failed: The Master Driver's Firmware is older than the Slave Driver's Firmware.

The current version of Firmware on your Wireless Wave Driver can be determined when you power it up by reading the following color combinations:

